

Performance Analysis 2010/11 Year End

CONTENTS

Performance Data

Domestic Violence

Hate Crime

British Crime Survey

Confidence & Satisfaction

Indicator	SPI 2.2 & NI21	Target	Rolling 12 mths (to Dec 2010)	2009/10 Year End	2008/09 Year End	Current MSF Position
Force	Percentage of people that agree that the police and local council are dealing with ASB and crime that matter in their area	58.9%	57.3%	54.7%	53.7%	3rd

Indicator	PPI 1.1	Target	Rolling 12 mths (to March 2011)	2009/10 Year End	2008/09 Year End	Current MSF / MSBCU Position
Force	Percentage of victims satisfied with OVERALL SERVICE provided by the police	89.0%	89.5%	88.1%	86.9%	2nd
Wirral		Improve on 89.2%	90.2%	89.2%	Reported at Force level only	2nd
Sefton		89.0%	90.6%	88.2%		2nd
Knowsley		89.0%	90.2%	87.9%		4th
St Helens		89.0%	88.1%	88.2%		4th
L North		89.0%	88.2%	85.8%		5th
L South		Improve on 89.3%	90.9%	89.3%	2nd	

Indicator	Management Information 1	Target	Rolling 12 mths (to March 2011)	2009/10 Year End	2008/09 Year End	Current MSF / MSBCU Position
Force	Percentage of victims satisfied with ACTION TAKEN by the police	87.5%	87.7%	85.4%	84.8%	2nd
Wirral		87.7%	89.2%	87.6%		2nd
Sefton		87.5%	88.3%	87.0%		3rd
Knowsley		87.5%	89.0%	82.8%		3rd
St Helens		87.5%	85.9%	85.8%		6th
L North		87.5%	86.7%	82.7%		6th
L South		87.5%	88.7%	86.2%		2nd

Indicator	Management Information 2	Target	Rolling 12 mths (to March 2011)	2009/10 Year End	2008/09 Year End	Current MSF / MSBCU Position
Force	Percentage of victims satisfied with FOLLOW UP by the police	79.7%	81.0%	78.4%	n/a	2nd
Wirral		79.7%	82.5%	77.9%		4th
Sefton		80.6%	82.1%	80.5%		3rd
Knowsley		79.7%	78.3%	78.6%		6th
St Helens		79.7%	77.8%	75.1%		5th
L North		79.7%	82.8%	77.8%		3rd
L South		79.7%	80.0%	78.9%		3rd

Indicator	PPI 1.2	Target	Rolling 12 mths (to March 2011)	2009/10 Year End	2008/09 Year End	Current MSF / MSBCU Position
Reported at Force level only	Variance in White & BRM victim satisfaction with OVERALL SERVICE provided by the police	5.0 pp	3.9 pp	6.8%	11.2%	3rd
White Satisfaction		n/a	90.3%	88.7%	87.3%	
BRM Satisfaction		n/a	86.3%	81.9%	76.1%	

Indicator	PPI 1.3	Target	Rolling 12 mths (to March 2011)	2009/10 Year End	2008/09 Year End	Current MSF / MSBCU Position
Force	Satisfaction of victims of racist incidents with OVERALL SERVICE provided by the police	88.5%	88.5%	85.8%	83.9%	2nd
Wirral		n/a	88.2%	85.7%		
Sefton			100.0%	77.8%		
Knowsley			100.0%	92.3%		
St Helens			87.5%	100.0%		
L North			84.6%	84.8%		
L South			84.0%	83.3%		

Serious Crime & Protection

Indicator	PPI 5.1	Target	Year 2010/11 (Apr-Mar)	2009/10 Year End	2008/09 Year End	Current MSF / MSBCU Position
Force	Number of Most Serious Violent Crimes, per 1,000 population	0.94 1,266	0.84 1,134	0.97 1,301	1.11	4th
Wirral		0.58 180	0.53 163	0.58 181	n/a	3rd
Sefton		0.64 176	0.55 149	0.64 177		5th
Knowsley		0.61 91	0.51 76	0.61 92		6th
St Helens		0.56 100	0.56 99	0.57 101		9th
L North		2.29 576	2.13 535	2.43 601		15th
L South		0.75 143	0.59 112	0.79 149		3rd

Indicator	PPI 5.5	Target	Year 2010/11 (Apr-Mar)	2009/10 Year End	2008/09 Year End	Current MSF / MSBCU Position
Force	Number of recorded Gun Crimes, per 1,000 population	0.14 190	0.14 187	0.15 196	0.25	3rd
Wirral		0.03 10	0.06 17	0.04 11	n/a	n/a
Sefton		0.06 16	0.10 27	0.06 17		
Knowsley		0.25 37	0.14 21	0.25 38		
St Helens		0.03 6	0.03 5	0.04 7		
L North		0.37 94	0.31 78	0.38 95		
L South		0.14 27	0.20 39	0.15 28		

Indicator	Management Information 3	Target	Year 2010/11 (Apr-Mar)	2009/10 Year End	2008/09 Year End	Current MSF / MSBCU Position
Force	Firearm Incident Rate, per 1,000 population	Monitor	0.053 71	0.072 97	n/a	n/a
Wirral			0.000 0	0.003 1		
Sefton			0.026 7	0.022 6		
Knowsley			0.114 17	0.199 30		
St Helens			0.017 3	0.006 1		
L North			0.135 34	0.170 42		
L South			0.052 10	0.090 17		

Indicator	PPI 5.6	Target	Year 2010/11 (Apr-Mar)	2009/10 Year End	2008/09 Year End	Current MSF / MSBCU Position
Force	Serious Knife Crime, per 1,000 population	0.57 769	0.44 589	0.60 804	0.66	3rd
Wirral		0.34 106	0.20 62	0.35 109	n/a	n/a
Sefton		0.33 91	0.28 77	0.34 94		
Knowsley		0.57 86	0.33 49	0.60 90		
St Helens		0.22 40	0.18 32	0.23 41		
L North		1.36 341	1.13 283	1.45 359		
L South		0.55 105	0.45 86	0.59 111		

Indicator	Management Information 4	Target	Year 2010/11 (Apr-Mar)	2009/10 Year End	2008/09 Year End	Current MSF / MSBCU Position
Force	Serious Sexual Offences & Sanction Detection % Rate	250 Detections	30.2% 251	29.8% 219	34.3%	4th
Wirral			30.4% 59	26.8% 38	n/a	n/a
Sefton			34.6% 44	25.8% 34		
Knowsley			49.2% 32	27.1% 13		
St Helens			30.7% 27	45.5% 30		
L North			23.9% 66	31.5% 74		
L South			28.0% 23	27.8% 30		

Tackling Crime

Indicator	Management Information	Target	Year 2010/11 (Apr-Mar)	2009/10 Year End	2008/09 Year End	Current MSF / MSBCU Position
Force	Violence with Injury (PSA 23)	5.23 7,066	4.88 6,587	7,439	n/a	1st
Wirral		4.97 1,533	4.34 1,340	1,548		2nd
Sefton		4.34 1,187	4.03 1,102	1,191		1st
Knowsley		3.56 531	3.40 508	533		1st
St Helens		3.77 667	3.60 637	672		2nd
L North		9.28 2,332	9.02 2,265	2,588		10th
L South		4.27 816	3.84 735	907		2nd

Indicator	PPI 5.3	Target	Year 2010/11 (Apr-Mar)	2009/10 Year End	2008/09 Year End	Current MSF / MSBCU Position
Force	Number of Assault with Less Serious Injury Crimes, per 1,000 population	4.29 5,800	4.04 5,451	4.54 6,120	4.98	1st
Wirral		4.39 1,353	3.81 1,175	4.37 1,354	n/a	3rd
Sefton		3.70 1,011	3.49 953	3.68 1,012		1st
Knowsley		2.95 440	2.89 432	2.92 441		1st
St Helens		3.20 567	3.04 538	3.20 568		1st
L North		6.99 1,756	6.89 1,730	8.04 1,984		6th
L South		3.52 673	3.26 623	4.05 761		1st

Indicator	Management Information 5	Target	Year 2010/11 (Apr-Mar)	2009/10 Year End	2008/09 Year End	Current MSF / MSBCU Position
Force	Assault with Less Serious Injury Sanction Detection Rate	48.0%	47.9%	45.9% 2,812	5.39	2nd
Wirral		48.2%	49.6%	48.2% 652	n/a	6th
Sefton		48.8%	49.5%	48.7% 493		5th
Knowsley		50.4%	62.5%	50.6% 223		3rd
St Helens		54.2%	57.4%	54.2% 308		3rd
L North		44.0%	38.3%	38.3% 760		8th
L South		50.0%	50.4%	49.4% 376		2nd

Indicator	PPI 6.3	Target	Year 2010/11 (Apr-Mar)	2009/10 Year End	2008/09 Year End	Current MSF / MSBCU Position
Force	Racially & Religiously Aggravated Crime Sanction Detection Rate	51.0%	56.1%	50.9%	47.5%	2nd
Wirral		54.9%	57.1%	54.8%	n/a	6th
Sefton		70.6%	75.8%	70.5%		2nd
Knowsley		55.7%	60.6%	55.6%		6th
St Helens		67.2%	74.4%	67.1%		1st
L North		42.5%	47.9%	42.4%		7th
L South		48.4%	50.0%	48.3%		5th

Indicator	PPI 5.2	Target	Year 2010/11 (Apr-Mar)	2009/10 Year End	2008/09 Year End	Current MSF / MSBCU Position
Force	Serious Acquisitive Crime Rate, per 1,000 population	14.63 19,758	12.70 17,148	14.66 19,764	15.96	3rd
Wirral		8.22 2,535	7.72 2,381	8.19 2,536	n/a	2nd
Sefton		11.75 3,212	10.34 2,826	11.68 3,213		7th
Knowsley		14.50 2,165	12.07 1,803	14.36 2,166		9th
St Helens		10.92 1,934	9.38 1,661	10.90 1,935		5th
L North		27.31 6,859	22.61 5,677	27.78 6,860		13th
L South		15.97 3,053	14.65 2,800	16.25 3,054		2nd

Promoting Safety

Indicator	Management Information 6	Target	Year 2010/11 (Apr-Mar)	2009/10 Year End	2008/09 Year End	Current MSF / MSBCU Position
Force	Number of Anti-Social Behaviour (ASB) Incidents	69,241	61,236	71,382	79,860	n/a
Wirral		13,795	12,943	14,222		
Sefton		9,631	9,697	9,929		
Knowsley		9,133	7,735	9,415		
St Helens		7,823	6,365	8,065		
L North		20,617	17,439	21,255		
L South		8,241	7,057	8,496		

Indicator	PPI 4.1	Target	Rolling 12 mths (to Dec 10)	2009/10 Year End	2008/09 Year End	Current MSF / MSBCU Position
Force	Percentage of People with high level of perceived ASB	18.5%	15.8%	20.6%	21.4%	4th

Local Performance Indicators

Indicator	PPI 5.4	Reduce	Year 2010/11 (Apr-Mar)	2009/10 Year End	2008/09 Year End	Current MSF / MSBCU Position
Force	Domestic Homicides	1	1	2	3	n/a

Indicator	PPI 8.1	Target	Year 2010/11 (Apr-Mar)	2009/10 Year End	2008/09 Year End	Current MSF / MSBCU Position
Forfeiture	Asset Recovery Rate	TBC	£1,844,000	£943,000	n/a	n/a
Confiscation			£1,489,000	£3,251,000		

Indicator	PPI 9.1	Target	Year 2010/11 (Apr-Mar)	2009/10 Year End	2008/09 Year End	Current MSF / MSBCU Position
Force	Road Traffic Casualties - Killed or Seriously Injured	TBC	502	537	n/a	n/a

Indicator	PPI 13.1	Target	Year 2010/11 (Apr-Mar)	2009/10 Year End	2008/09 Year End	Current MSF / MSBCU Position
Force	Police Officer Sickness	3.5%	3.3%	3.8%	3.8%	27th
Wirral		Target set at Force level	3.0%	3.8%		13th
Sefton			4.9%	3.8%		13th
Knowsley			3.3%	3.3%		6th
St Helens			3.2%	2.8%		5th
L North			2.9%	3.7%		8th
L South			3.4%	4.7%		14th
Central Services			3.2%	3.20%		n/a

Indicator	PPI 13.2	Target	Year 2010/11 (Apr-Mar)	2009/10 Year End	2008/09 Year End	Current MSF / MSBCU Position
Force	Police Staff Sickness	4.0%	3.3%	4.7%	4.5%	22nd
Wirral		Target set at Force level	2.9%	5.1%		7th
Sefton			3.2%	5.8%		10th
Knowsley			2.7%	3.2%		7th
St Helens			2.2%	3.9%		2nd
L North			4.2%	4.3%		11th
L South			4.4%	7.4%		14th
Central Services			3.2%	3.0%		n/a

Indicator	PPI 3.1	Target	Year 2010/11 (Apr-Mar)	2009/10 Year End	2008/09 Year End	Current MSF / MSBCU Position
Force (% Rate)	BRM Officer Recruitment	5.7%	0.0%	5.7%	4.7%	6th

Indicator	PPI 3.2	Target	Year 2010/11 (Apr-Mar)	2009/10 Year End	2008/09 Year End	Current MSF / MSBCU Position
Force (% Rate)	Female Police Officer Representation	25.1%	24.8%	25.1%	23.6%	38th

Indicator	Management Information	Target	Year 2010/11 (Apr-Mar)	2009/10 Year End	2008/09 Year End	Current MSF / MSBCU Position
Force	Complaints of Incivility	89.67 356	72.04 286	404	n/a	n/a
Wirral		82.08 49	78.73 47	52		
Sefton		98.36 48	69.67 34	55		
Knowsley		65.85 27	58.54 24	29		
St Helens		122.22 44	55.56 20	50		
L North		101.25 89	89.87 79	101		
L South		68.41 34	40.24 20	36		
Operational Support		114.29 44	80.52 31	50		
Matrix		47.10 13	61.59 17	14		
ASB Taskforce		102.56 8	38.46 3	9		
Other		-	- 11	8		

Indicator	Management Information	Target	Year 2010/11 (Apr-Mar)	2009/10 Year End	2008/09 Year End	Current MSF / MSBCU Position
Force	Criminal Damage	n/a	13.82 18,662	16.63 22,459	24,791	4th
Wirral			9.71 2,995	11.43 3,526	n/a	2nd
Sefton			11.95 3,265	14.62 4,009		6th
Knowsley			14.78 2,207	18.86 2,824		9th
St Helens			11.38 2,015	15.22 2,690		3rd
L North			22.66 5,690	25.52 6,392		15th
L South			13.03 2,490	15.83 3,018		13th

Domestic violence Year End Data 2010/11

Table 1: Forcewide DV Offences 2010/11

Offence Recorded	Total
ABDUCTION OF A CHILD BY PARENT	2
ADMINISTERING POISON WITH INTENT TO INJURE OR ANNOY	1
AFFRAY	33
AGGRAVATED BURGLARY IN A DWELLING.	3
AGGRAVATED VEHICLE TAKING	6
AGGRAVATED VEHICLE TAKING WHERE ONLY AGGRAVATING FACTOR IS CRIMINAL DAMAGE OF £5000 OR UNDER	3
AIDING, ABETTING CAUSING OR PERMITTING DANGEROUS DRIVING	3
ARSON ENDANGERING LIFE	13
ARSON NOT ENDANGERING LIFE	1
ASSAULT ON A CONSTABLE (LOCAL ACTS)	1
ASSAULT ON A CONSTABLE (POLICE ACT 1996)	1
ASSAULT ON A COUNTY COURT OFFICER	1
ASSAULT ON A FEMALE BY PENETRATION	10
ASSAULT OF A FEMALE CHILD UNDER 13 BY PENETRATION	4
ATTEMPTED BURGLARY IN A DWELLING	1
ATTEMPTED MURDER	3
ATTEMPTING TO PERVERT THE COURSE OF PUBLIC JUSTICE (FABRICATION OF FALSE EVIDENCE, CAUSE PERSON TO BE WRONGLY CONVICTED, INTERFERENCE WITH WITNESS)	1
ATTEMPTED RAPE OF A FEMALE CHILD UNDER 13 BY A MALE	1
ATTEMPTED RAPE OF FEMALE AGED 16 OR OVER. SEXUAL OFFENCES ACT 1956 SEC 1(P.T).	2
BLACKMAIL	2
BREACH OF ANTI SOCIAL BEHAVIOUR ORDER.	2
BREACH OF CONDITIONS OF INJUNCTION AGAINST HARASSMENT	9
BREACH OF NON - MOLESTATION ORDER	72
BREACH OF A RESTRAINING ORDER ISSUED ON ACQUITTAL	6
BURGLARY IN A BUILDING OTHER THAN A DWELLING	1
BURGLARY IN A DWELLING	20
CAUSING A FEMALE PERSON TO ENGAGE IN SEXUAL ACTIVITY WITHOUT CONSENT	1
CAUSING INTENTIONAL HARASSMENT ALARM OR DISTRESS (SEC 4A POA)	25
COMMON ASSAULT AND BATTERY	777
CRIMINAL DAMAGE ENDANGERING LIFE	1
CRIMINAL DAMAGE ENDANGERING LIFE, OTHER	1
CRIMINAL DAMAGE TO A DWELLING ENDANGERING LIFE	3
CRUELTY TO AND NEGLECT OF CHILDREN	17
FALSE ENTRY OR STATEMENT IN DOCUMENT	1
FALSE IMPRISONMENT	6
FEAR OF PROVOCATION OF VIOLENCE (SEC 4 POA)	29
FRAUD BY FALSE REPRESENTATION (53C) CHEQUE, PLASTIC CARD AND ONLINE BANK	3
FRAUD BY FALSE REPRESENTATION (53D) OTHER FRAUD	1
HARASSMENT (BREACH OF RESTRAINING ORDER)	95
HARASSMENT (SEC 2)	94

HARASSMENT ETC. OF A PERSON IN HIS HOME	1
HARASSMENT (SEC4) PUTTING PEOPLE IN FEAR OF VIOLENCE	50
HARASSMENT, ALARM OR DISTRESS (SEC 5 POA)	29
HARMING OR THREATENING TO HARM A WITNESS	1
HAVING AN ARTICLE WITH A BLADE OR POINT IN A PUBLIC PLACE	1
HAVING POSSESSION OF CANNABIS.	5
INTIMIDATING A JUROR OR WITNESS OR PERSON ASSISTING IN AN INVESTIGATION OF OFFENCE	1
INTIMIDATING OR INTENDING TO INTIMIDATE A WITNESS	8
MURDER - PERSON AGED OVER 1 YEAR	1
OTHER CRIMINAL DAMAGE TO A BUILDING OTHER THAN A DWELLING	2
OTHER CRIMINAL DAMAGE TO A BUILDING OTHER THAN A DWELLING UNDER £500	1
OTHER CRIMINAL DAMAGE TO A DWELLING	75
OTHER CRIMINAL DAMAGE TO A DWELLING £500 - £5000	31
OTHER CRIMINAL DAMAGE TO A DWELLING UNDER £500	158
OTHER CRIMINAL DAMAGE TO A VEHICLE	44
OTHER CRIMINAL DAMAGE TO A VEHICLE UNDER £500	17
OTHER CRIMINAL DAMAGE TO A VEHICLE £500 - £5000	9
OTHER CRIMINAL DAMAGE, OTHER	30
OTHER CRIMINAL DAMAGE, OTHER £500 - £5000	10
OTHER CRIMINAL DAMAGE, OTHER UNDER£500	49
OTHER INDICTABLE OR TRIABLE EITHER WAY OFFENCES - OTHER OFFENCES (SPECIFY OFFENCE, ACT AND SECTION (OR COMMON LAW) UNDER WHICH PROCEEDINGS WERE TAKEN) - AS PER HOCR SEC 99/99	2
POSSESSING FIREARM OR IMITATION FIREARM WHILE COMMITTING OR BEING ARRESTED FOR SPECIFIED OFFENCE	1
POSSESSING FIREARM OR IMITATION FIREARM WITH INTENT TO CAUSE FEAR OF VIOLENCE	5
POSSESSION OF AN INDECENT PHOTOGRAPH OR PSEUDO-PHOTOGRAPH OF A CHILD	1
POSSESSION OF OFFENSIVE WEAPON WITHOUT LAWFUL AUTHORITY OR REASONABLE EXCUSE	5
RACIALLY OR RELIGIOUSLY AGGRAVATED HARASSMENT, ALARM OR DISTRESS	2
RACIALLY OR RELIGIOUSLY AGGRAVATED COMMON ASSAULT OR BEATING	1
RAPE OF A FEMALE CHILD UNDER 13 BY A MALE	2
RAPE OF A FEMALE AGED 16 OR OVER	21
RAPE OF A FEMALE AGED 16 OR OVER. SEXUAL OFFENCES ACT 1956 SEC 1(PT).	11
RAPE OF A FEMALE AGED UNDER 16. SEXUAL OFFENCES ACT 1956 SEC 1(PT).	4
RAPE OF A FEMALE AGED UNDER 16	3
RAPE OF A MALE CHILD UNDER 13 BY A MALE	2
ROBBERY OF PERSONAL PROPERTY	2
SEC 18. WOUNDING WITH INTENT TO DO GRIEVOUS BODILY HARM	58
SEC 20. INFLECTING GRIEVOUS BODILY HARM, WITHOUT INTENT WITH OR WITHOUT WEAPON	49
SEC 20. MALICIOUS WOUNDING	27
SEC 47. ASSAULT OCCASIONING ACTUAL BODILY HARM	1,502

SEXUAL ACTIVITY WITH A FEMALE PERSON WITH A MENTAL DISORDER IMPEDING CHOICE - NO PENETRATION	1
SEXUAL ACTIVITY WITH A FEMALE CHILD UNDER 13 - OFFENDER AGED 18 OR OVER - NO PENETRATION	1
SEXUAL ACTIVITY WITH A FEMALE CHILD UNDER 13 - OFFENDER AGED UNDER 18 - PENETRATION	2
SEXUAL ACTIVITY WITH A FEMALE CHILD FAMILY MEMBER - OFFENDER AGED 18 OR OVER AT TIME OF OFFENCE & VICTIM UNDER 13 - NO PENETRATION	1
SEXUAL ACTIVITY WITH A MALE CHILD UNDER 13 - OFFENDER AGED 18 OR OVER - NO PENETRATION	1
SEXUAL ASSAULT ON A FEMALE	14
SEXUAL ASSAULT OF A FEMALE CHILD UNDER 13	6
THEFT FROM THE PERSON OF ANOTHER	11
THEFT IF NOT CLASSIFIED ELSEWHERE (SIMPLE)	16
THEFT IN A DWELLING OTHER THAN FROM AUTOMATIC MACHINE OR METER	40
THEFT OF MOTOR VEHICLE	3
THREATS TO DESTROY OR DAMAGE PROPERTY	16
THREATS TO KILL	30
UNAUTHORISED TAKING OF A MOTOR VEHICLE (DOES NOT INCLUDE BEING CARRIED KNOWING MOTOR VEHICLE HAS BEEN TAKEN)	19
Total	3638

Key Points:

- **2009/10 3,515 DV offences**
- **2010/11 3,638 DV Offences**
- **Most frequent offences 2009/10:** 105A ASSAULT WITHOUT INJURY 758 offences and 8G ACTUAL BODILY HARM AND OTHER INJURY 1,483 offences.
- **Most frequent offences 2010/11:** SEC 47. ASSAULT OCCASIONING ACTUAL BODILY HARM 1,502 offences and COMMON ASSAULT AND BATTERY 777 offences.

Please note: 105A assault without injury is the same as common assault and battery.
8G actual bodily harm is the same as Section 47 assault occasioning actual bodily harm.

Table 2: DV Incidents, Repeat Victims and Repeat Victims Rate 2010/11

	Apr-10	May-10	Jun-10	Jul-10	Aug-10	Sep-10	Oct-10	Nov-10	Dec-10	Jan-11	Feb-11	Mar-11	Year End TOTAL
DV Incidents (Protect ACPO)	1,799	2,182	2,212	1,947	2,059	2,104	2,186	2,074	2,323	2,358	2,223	2,187	25,654
DV RV (Protect ACPO)	639	769	811	756	804	764	840	775	848	866	850	826	9,548
DV RV Rate (Protect ACPO)	35.5%	35.2%	36.7%	38.8%	39.0%	36.3%	38.4%	37.4%	36.5%	36.7%	38.2%	37.8%	37.2%

Note: The figures above are recorded under the ACPO definition for domestic violence which features those offenders and victims aged 18 and over.

Table 3: DV Incidents, Repeat Victims and Repeat Victims Rate 2010/11 FCIU Wider Definition.

	Apr-10	May-10	Jun-10	Jul-10	Aug-10	Sep-10	Oct-10	Nov-10	Dec-10	Jan-11	Feb-11	Mar-11	Year End TOTAL
DV Incidents	2,329	2,651	2,709	2,417	2,552	2,593	2,675	2,429	2,666	2,780	2,614	2,654	31,069
DV RV	964	1,039	1,115	1,058	1,051	1,068	1,139	1,072	1,111	1,168	1,101	1,134	13,020
DV RV Rate	41.4%	39.2%	41.2%	43.8%	41.2%	41.2%	42.6%	44.1%	41.7%	42.0%	42.1%	42.7%	41.9%

Note: The figures above are recorded using the Family Crime Investigation Unit (FCIU) method, which includes offenders and victims under the age of 18 and family members from a wider definition than that employed by ACPO.

Table 4: DV Crimes, Sanction Detections and Sanction Detection Rate 2010/11

	Apr-10	May-10	Jun-10	Jul-10	Aug-10	Sep-10	Oct-10	Nov-10	Dec-10	Jan-11	Feb-11	Mar-11	Year End TOTAL
DV Crime	355	306	364	380	341	283	353	301	272	305	304	279	3,843
DV SD	231	216	238	274	250	210	266	215	169	213	197	167	2,646
DV SD Rate	65.1%	70.6%	65.4%	72.1%	73.3%	74.2%	75.4%	71.4%	62.1%	69.8%	64.8%	59.9%	68.8%

Hate Crime Year End 2010/11

For 2010/11 Merseyside Police Authority's Members agreed to monitor hate crime incidents and crimes via the Performance and Scrutiny Committee. As part of the monitoring process Officers and Members alike visited Merseyside Police's specialist hate crime unit Sigma to gain an insight into the work valuable of the team and the complexities surrounding hate crimes and incidents.

Hate Crime can be broken down into five separate strands which are:

- Disability
- Race
- Religion or belief
- Sexual orientation
- Transgender

These strands are the minimum requirement. Individual forces may include other strands as per local needs. It is important to note there is no hierarchy amongst the strands.

The Association of Chief Police Officers uses the following definitions to distinguish between a hate incident and a hate crime.

A **hate incident** is:

“Any incident, which may or may not constitute a criminal offence, which is perceived by the victim or any other person, as being motivated by prejudice or hate.”

Whilst a **hate crime** is defined specifically as:

“Any hate incident, which constitutes a criminal offence, perceived by the victim or any other person, as being motivated by prejudice or hate.”

Hate crime Data

Merseyside Police have provided the data shown below in response to the Authority's request. Data is monitored by the Authority's Performance Team and reported to each Performance Scrutiny and Review Committee meeting as part of the performance update.

Table 1: Hate Crime Sanction Detection Rates 2010/11

Year	Sanction Detections
2006/07	25%
2007/08	40%
2008/09	46%
2009/10	47%
2010/11	46%

Table 2: Hate crimes (Force & BCU level)

April 2010 to March 2011	Wirral	Sefton	Knowsley	St Helens	Liverpool North	Liverpool South	Not stated	FORCE
Disability	6	12	18	6	32	7	0	81
Racial	144	96	110	85	524	130	3	1,092
Religious	3	0	1	1	15	5	0	25
Sexual orientation	16	18	20	26	72	13	0	165
Transgender	3	1	0	0	3	0	0	7
Total 5-strand hate flags (may include multiple-count crimes)	172	127	149	118	646	155	3	1,370
Total 5-strand hate crimes (distinct)	168	127	146	117	623	149	3	1,333
Total hate crime (incl. other flags / rac. agg. class)	193	127	149	122	684	191	3	1,469

Table 3: Hate Incidents WITHOUT Hate Crimes (Force & BCU level)

April 2010 to March 2011	Wirral	Sefton	Knowsley	St Helens	Liverpool North	Liverpool South	Not stated	FORCE
Disability	4	0	19	0	7	3	0	33
Racial	9	7	84	2	90	32	7	231
Religious	0	0	1	0	0	5	0	6
Sexual orientation	2	1	13	1	14	5	0	36
Transgender	1	0	0	0	1	0	0	2
Total 5-strand hate flags (may include multiple-count occurrences)	16	8	117	3	112	45	7	308
Total 5-strand hate occurrences (distinct)	16	8	109	3	112	41	7	296
Total hate occurrences (incl. other flags)	16	8	109	3	115	46	7	304

NB: The consolidation of multi strand offences may lead to a slight exaggeration of the data e.g. racial abuse and homophobic abuse used in one offence. Previously, data reported to the Authority included a number of hate crime categories available on Niche (including Age, Asylum Seeker, Refugee, Vulnerable Adult, Police Officer, and Gender etc) that are NOT official hate categories, however, these strands are reported in the final row of each table.

Hate crime data from ACPO 2009 calendar year

For the first time in 2010, ACPO published hate crime statistics from Police Forces from across the country. The figures show that in 2009 (calendar year) there were 52,028 hate crimes recorded across the UK. When broken down into the five hate crime strands the national results were:

National Results 2009

Disability - 1,402
Race - 43,426
Religion/Faith - 2,083
Sexual Orientation - 4,805
Transgender - 312
Total - 52,028
Source: ACPO

Merseyside's results for **2009** (calendar year):

Disability - 17
Race – 1,068
Religion/Faith - 25
Sexual Orientation - 144
Transgender - 4
Total – 1,258
Source: ACPO

Merseyside's results for **2010/11**:

Disability - 81
Race – 1,092
Religion/Faith - 25
Sexual Orientation - 165
Transgender - 7
Total – 1,370
Source: Merseyside Police

Comparing ACPO's 2009 results to Merseyside's latest 2010/11 year end results shows that although there were less hate crimes in the calendar year of 2009 compared to 2010/11, the frequency of the various hate crime strands is similar with the exception of 'Disability' which appears to have increased from 17 to 81.

British Crime Survey Year End

The BCS is a face-to-face victimisation survey in which people, resident in households in England and Wales, are asked about their experiences of crime in the 12 months prior to interview. Respondents to the survey are also asked about their attitudes towards different crime-related issues such as the police, criminal justice system, and perceptions of crime and ASB. Around 1,000 interviews are conducted per police force area.

Members may recall on July 8th 2010 a report on the year end figures for the BCS was presented to the Authority at a Target Setting meeting. During the meeting Members agreed to monitor the BCS results for 2010/11, monitoring will continue for 2011/12.

SPI 2.2 & National Indicator 21: Dealing with local concerns

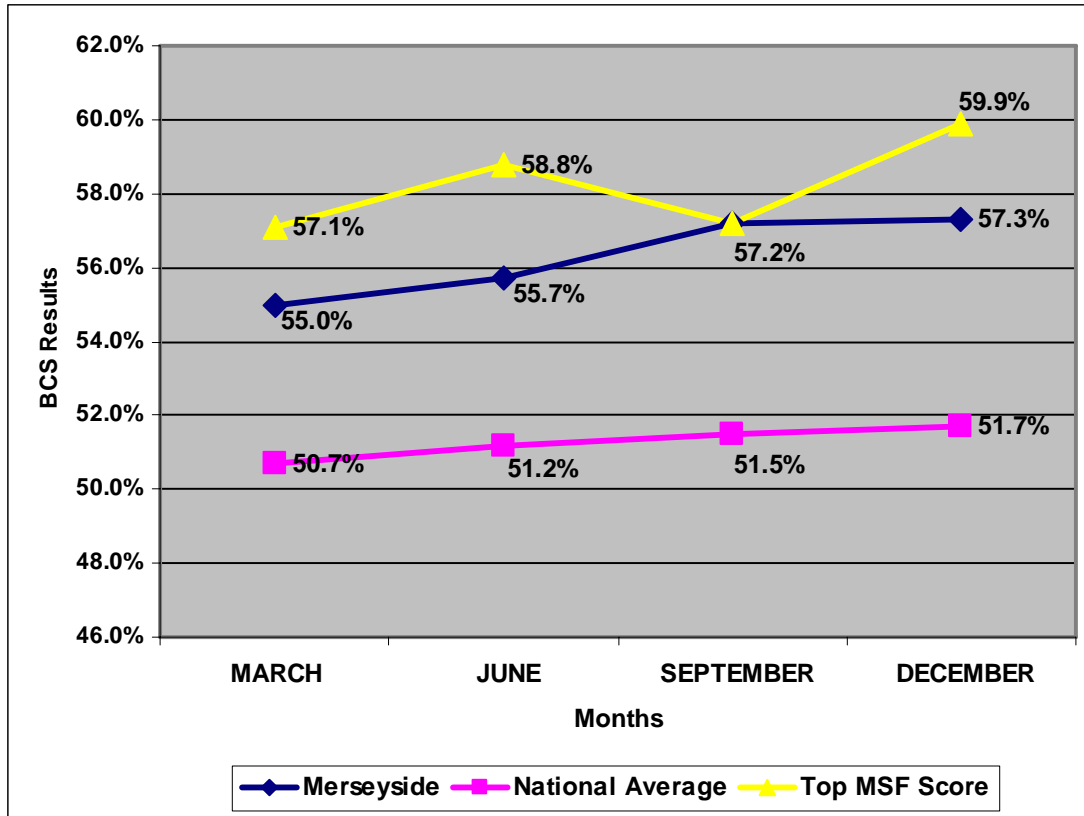
Percentage of respondents answering 'strongly agree' or 'tend to agree' when asked 'The police and local council are dealing with the ASB and crime issues that matter in this area'.

2010/11 Results

Year to March 2010 National / MSF Position	Year to June 2010 National / MSF Position	Year to September 2010 National / MSF Position	Year to December 2010 National / MSF Position
55.0%	55.7%	57.2%	57.3%
6th / 2nd	5th / 2nd	1st / 1st	3rd / 3rd

2009/10 Results

Year to March 2009 National / MSF Position	Year to June 2009 National / MSF Position	Year to September 2009 National / MSF Position	Year to December 2009 National / MSF Position
56.9%	57.0%	56.0%	54.7%
1st / 1st	1st / 1st	3rd / 1st	8th / 2nd



Although no longer a national indicator, SPI 2.2 'Dealing with Local Concerns' allows Force's to compare BCS results with one another, be it nationally or via the MSF groups. Looking at the MSF positions over 2010 (above) Merseyside has consistently been within the top 3. Nationally, Merseyside has sustained a place within the top 6 Forces out of 42.

For 2010/11, Merseyside set a Forcewide target of 58.9% for this indicator. The year end result was 57.3%, 1.7 percentage points below target. Although off target, Merseyside has improved on the previous year's year end result of 54.7%. In terms of comparing results with the national average, the trend lines in the graph above show Merseyside has maintained an above national average outcome for this BCS indicator from March to December 2010. Merseyside's results have also improved over the four reporting periods, with September's result being the joint top nationally along with Northumbria.

Public Confidence Diagnostic 2

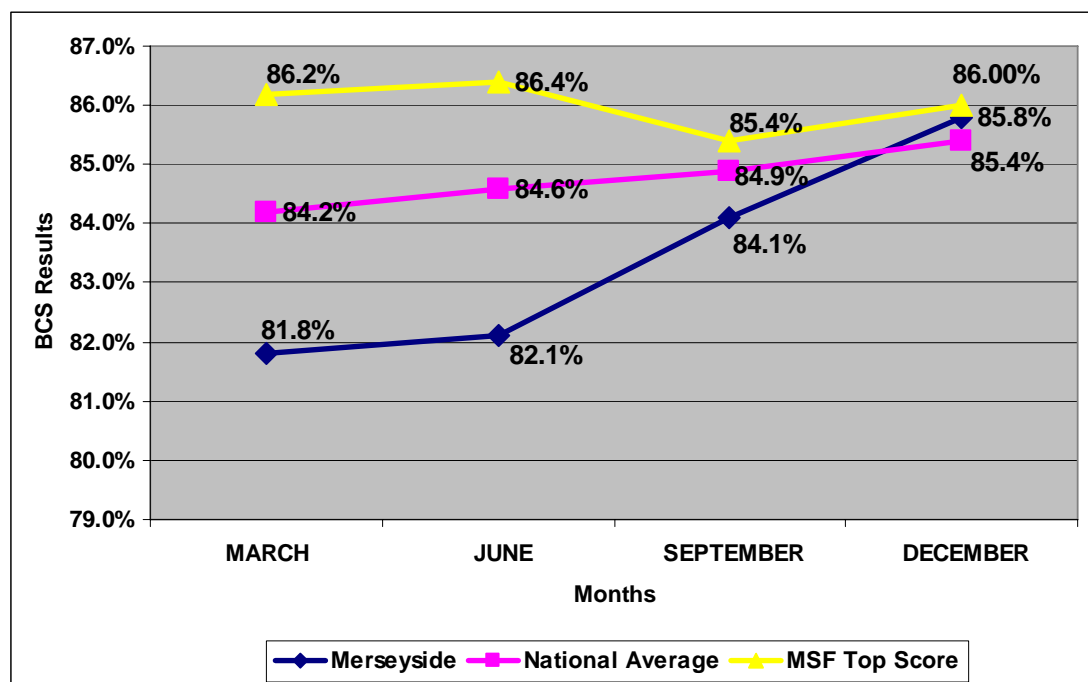
Percentage of respondents answering 'strongly agree' or 'tend to agree' when asked 'They (the police in this area) would treat you with respect if you had contact with them for any reason'.

2010/11 Results

Year to March 2010 National / MSF Position	Year to June 2010 National / MSF Position	Year to Sept 2010 National / MSF Position	Year to December 2010 National / MSF Position
81.8%	82.1%	84.1%	85.8%
37 th / 4 th	36 th / 5 th	29 th / 4 th	18 th / 2 nd

2009/10 Results

Year to March 2009 National / MSF Position	Year to June 2009 National / MSF Position	Year to September 2009 National / MSF Position	Year to December 2009 National / MSF Position
80.9%	81.5%	80.7%	79.7%
40 th / 5 th	39 th / 5 th	40 th / 5 th	41 st / 5 th



Merseyside Police Authority agreed to monitor results in this indicator closely following concerns raised by Members over results and consistently being placed bottom of the MSF group. For 2010/11, Merseyside has witnessed improvements in BCS results and improved national and MSF standings. 2010/11's results included 5th, 4th and 2nd place standings within the MSF group.

The percentage of respondents answering 'strongly agree' or 'tend to agree' when asked 'They (the police in this area) would treat you with respect if you

had contact with them for any reason' has also improved over the last 12 months. 2009/10 BCS results had a high of 81.5% and a low of 79.7%, while this year Merseyside Police recorded a high of 85.8% and a low of 81.8%. 2010/11's results, up until December, were all below the national average.

Public Confidence Diagnostic 3

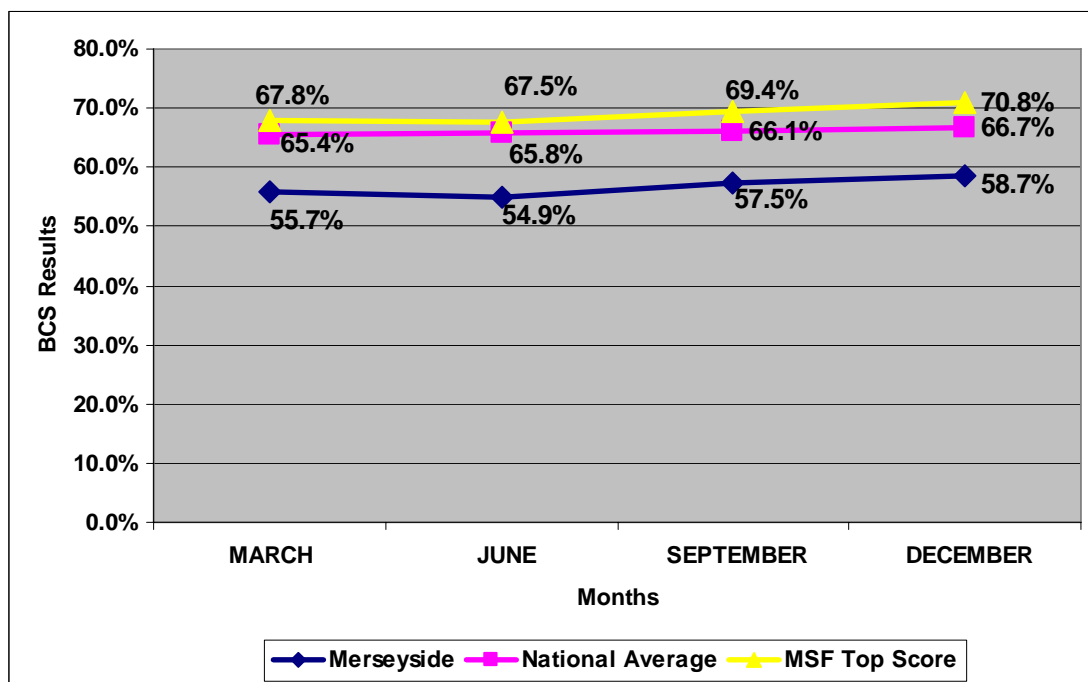
Percentage of respondents answering 'strongly agree' or 'tend to agree' when asked 'The police in this area treat everyone fairly regardless of who they are'.

2010/11 Results

Year to March 2010 National / MSF Position	Year to June 2010 National / MSF Position	Year to Sept 2010 National / MSF Position	Year to December 2010 National / MSF Position
55.7%	54.9%	57.5%	58.7%
42nd / 5th	41st / 5th	41st / 5th	41st / 5th

2009/10 Results

Year to March 09 National / MSF Position	Year to June 09 National / MSF Position	Year to September 09 National / MSF Position	Year to December 09 National / MSF Position
59.5%	58.8%	57.1%	55.2%
38 th / 5 th	38 th / 5 th	41 st / 5 th	42 nd / 5 th



As with Public Confidence Diagnostic 2, Merseyside Police Authority again agreed to monitor results in this indicator following concerns raised by Members regarding the previous year's results. Results for 2009/10 showed that out of the 5 MSF group members Merseyside's results were consistently the lowest. Looking at the national picture, Merseyside was consistently placed within the bottom 5 forces throughout the year.

For 2010/11's BCS results Merseyside Police remained bottom of its MSF group and within the bottom two forces nationally throughout the year. The actual results for the amount of people who agree or strongly agree that 'the police in this area treat everyone fairly regardless of who they are' were consistently below the national average and at one point the difference between Merseyside's result and the top placed force within the MSF group was 12.6 percentage points.

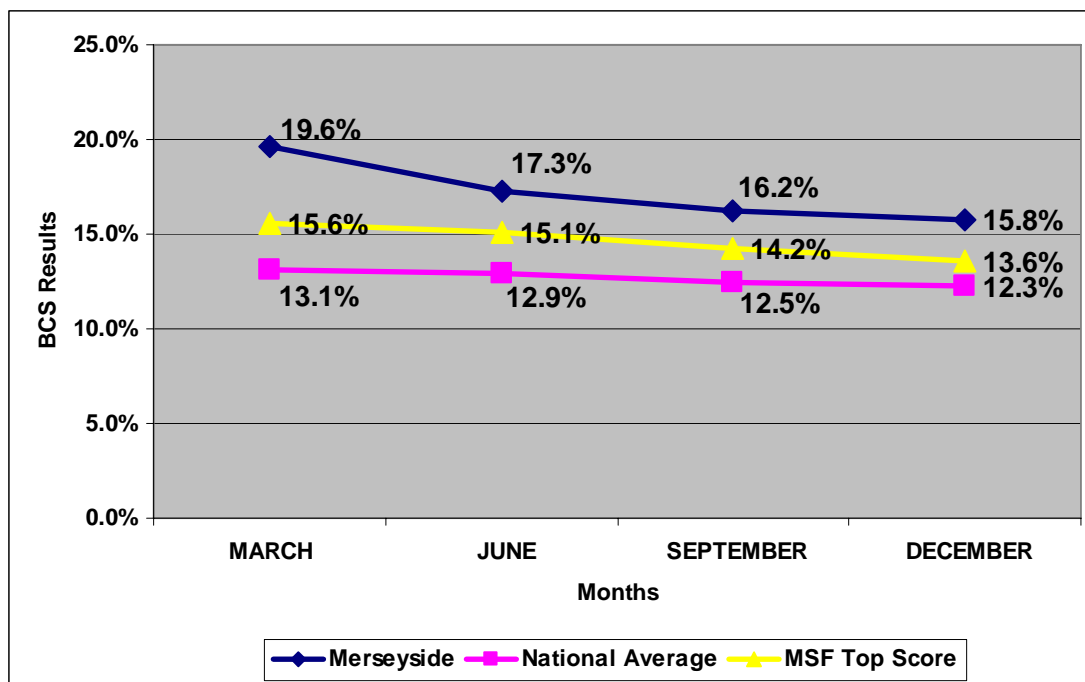
SPI 4.1: Perceptions of anti-social behaviour

2010/11 Results

Year to March 2010 National / MSF Position	Year to June 2010 National / MSF Position	Year to Sept 2010 National / MSF Position	Year to December 2010 National / MSF Position
19.6%	17.3%	16.2%	15.8%
38th / 5th	36th / 3rd	36th / 4th	36th / 4th

2009/10 Results

Year to March 09 National / MSF Position	Year to June 09 National / MSF Position	Year to September 09 National / MSF Position	Year to December 09 National / MSF Position
20.0%	19.2%	20.9%	20.6%
37th / 3rd	35th / 3rd	41st / 5th	41st / 5th



Merseyside Police Authority in conjunction with Merseyside Police and our partners set appropriate targets to reduce the number of ASB incidents and to reduce the perception of ASB for 2010/11. This year a maximum level of 18.5% was set for this BCS indicator. Merseyside managed to come in under the maximum with 15.8% of people surveyed on Merseyside having a high level of perceived ASB. Looking at the graph above Merseyside's results improved over each reporting period from 19.6% to 15.8%. The gap between Merseyside's results and the MSF top score reduced also throughout the year. For example, in March the range between Merseyside and the MSF top placed force was 4 percentage points, while in December the range narrowed to 2.2 percentage points.

Focusing on the national average results for 2010/11, the chart above apparently demonstrates Merseyside has room for improvement. However, when considering Merseyside's MSF group top score has been consistently above the national average puts this result into context.

SPI 4.2: Perceptions of drunk or rowdy behaviour

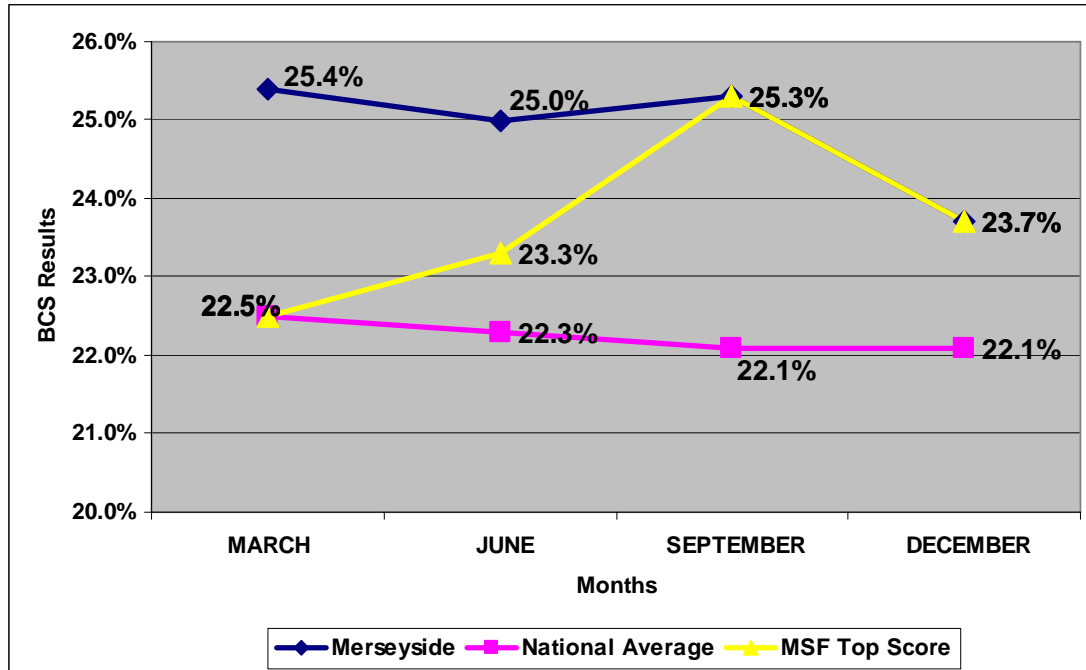
Percentage of people who perceive drunk or rowdy behaviour is a problem in their local area.

2010/11 Results

Year to March 2010 National / MSF Position	Year to June 2010 National / MSF Position	Year to Sept 2010 National / MSF Position	Year to December 2010 National / MSF Position
25.4%	25.0%	25.3%	23.7%
32 nd / 2 nd	31 st / 2 nd	31 st / 1 st	30 th / 1 st

2009/10 Results

Year to March 09 National / MSF Position	Year to June 09 National / MSF Position	Year to September 09 National / MSF Position	Year to December 09 National / MSF Position
26.8%	24.8%	26.7%	26.6%
28 th / 2 nd	23 rd / 2 nd	34 th / 3 rd	34 th / 4 th



This indicator measures the public's perception of drunk and rowdy behaviour in their area. Merseyside's results have been higher than the national average throughout the year, although December's result was considerably closer to the national average with only 1.6 percentage point difference.

Comparing Merseyside's results with its peers shows that despite a 2.9 percentage point difference between the highest scoring force within the MSF group in March, Merseyside's results grew closer to the MSF top score in June and for September and December Merseyside had the best results from the survey within the group.

Results for this indicator should be considered against the numerous events and the nightlife that Merseyside experiences. Events for 2010 included, screenings of World Cup 2010 throughout pubs and bars on Merseyside, Mathew Street Festival and the MOBO awards.

SPI 4.3: Perceptions of local drug use

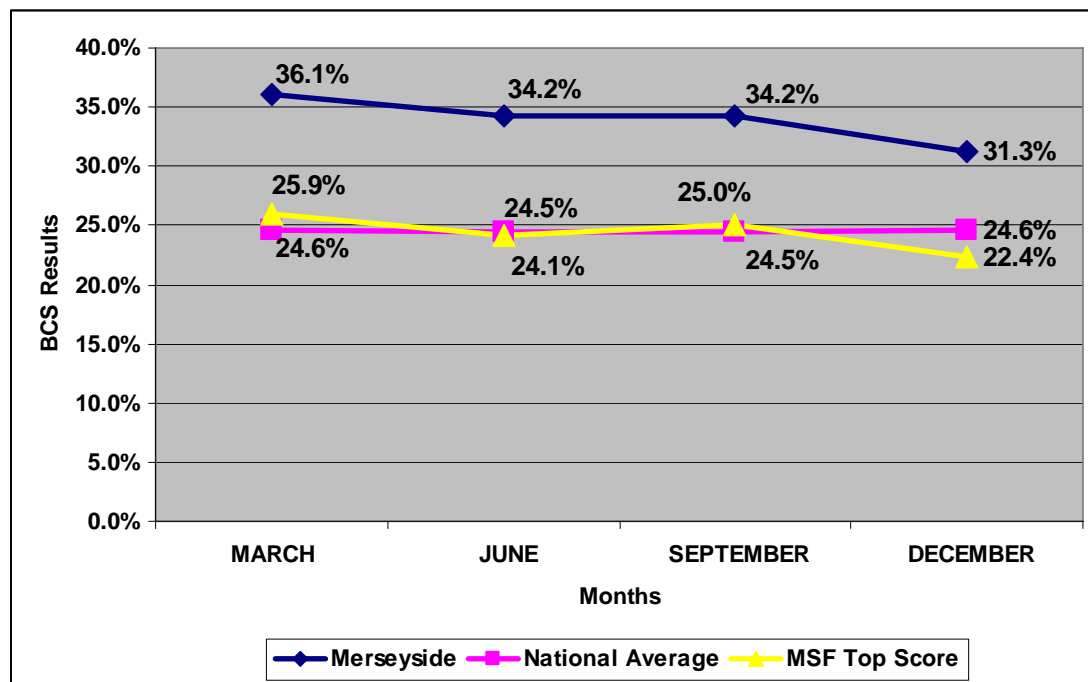
Percentage who perceive that people using or dealing drugs are a problem in their local area.

2010/11 Results

Year to March 2010 National / MSF Position	Year to June 2010 National / MSF Position	Year to Sept 2010 National / MSF Position	Year to December 2010 National / MSF Position
36.1%	34.2%	34.2%	31.3%
40th / 5th	40th / 5th	39th / 5th	37 th / 4 th

2009/10 Results

Year to March 09 National / MSF Position	Year to June 09 National / MSF Position	Year to September 09 National / MSF Position	Year to December 09 National / MSF Position
36.2%	35.8%	35.5%	36.3%
42 nd / 5 th	42 nd / 5 th	42 nd / 5 th	42 nd / 5 th



Perceptions of local drug use on Merseyside, according to the BCS, have fallen from a year high of 36.1% in March down to 31.3% in December. Compared to 2009/10's figures, Merseyside has improved each month with the latest BCS result in December 5 percentage points below the 2009/10 equivalent.

Looking at Merseyside's results against the national average and the MSF top score shows there is room for further improvement. The national average results for this year have maintained at around 24 to 25%, while Merseyside's results have ranged from 36.1% to 31.3% in comparison. The top scores in

Merseyside's MSF group highlight further the scope for improvement with the results ranging from 25.9% to 22.4%.

Conclusion

For the crime types and population it covers, the BCS provides a better reflection of the extent of household and personal crime than police recorded statistics because the survey includes crimes that are not reported to or recorded by the police. For 2011/12 the Authority and the Force must look at the efforts and resources put into each indicator then analyse and assess the value of each action.